

Split Port™

Splitport™

Low voltage cable pass-through for new and existing cables

Available with or without a Grommet

The Splitport™ plate is designed with keyed tabs to structurally withstand pulling and pushing of cables as the installer organizes them for a neat "dress out presentation."

Installing the Splitport™ plate is easy. Install one half and then the second half, all while the cabling is held or lying naturally out of the way, or just assemble around the cables and slide into position and secure to a low voltage mounting bracket.

Add the grommet insert to maintain a closed area leaving an aesthetically clean appearance.

Available in Industry Standard Colors

White	Light Almond	Almond	Ivory	Black
-------	--------------	--------	-------	-------



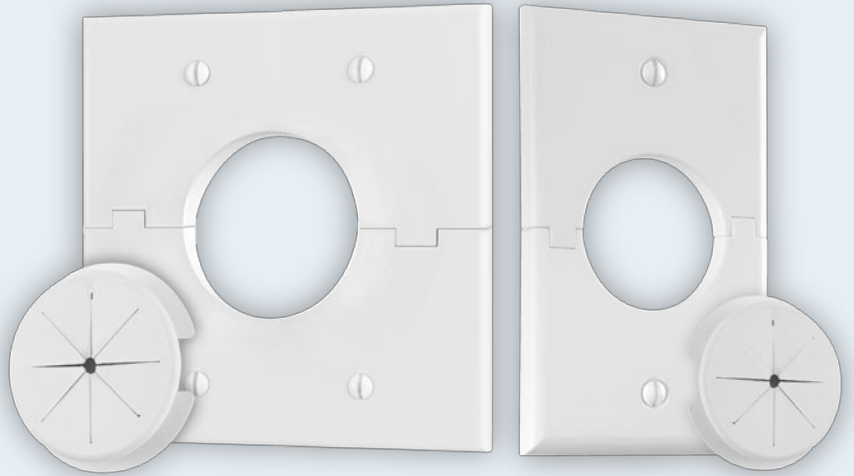
Use a utility knife when installing the grommet around preexisting cables. The grommet is designed to hold its shape after being split open.

Splitport with Grommet Includes:

- Single / Double Splitport Wall Plate
- Single / Double Gang Grommet
- Screw Hardware

Flush Surface

The redesigned Splitport features a flush surface that now accepts our single or double gang grommet



Clean Appearance

The grommet wraps neatly around cables to close off the opening.



With Grommet: Single Gang - PN: 1GSXX-GR1 / Double Gang - PN: 2GSXX-GR2
Without Grommet: Single Gang - PN: 1GSXX / Double Gang - PN: 2GSXX

Master pack: 25

Single Gang Dimensions: 4.51x2.75x0.25", Opening Diameter: 1.5"

Double Gang Dimensions: 4.70x4.56x0.25", Opening Diameter: 2"

Patented with multiple patents pending.



www.midlite.com

115 Wordell St. Fall River, MA 02721

Tel: 508.676.5169 / Toll Free: 800.606.5169 / Fax: 508.861.0105

 **MIDLITE®**
QUALITY CUSTOM PRODUCTS